

Lāzerskanēšana, ortofoto,
topogrāfijas, 3d modeļa
izveidošana. Rail Baltic projekta
vajadzībām

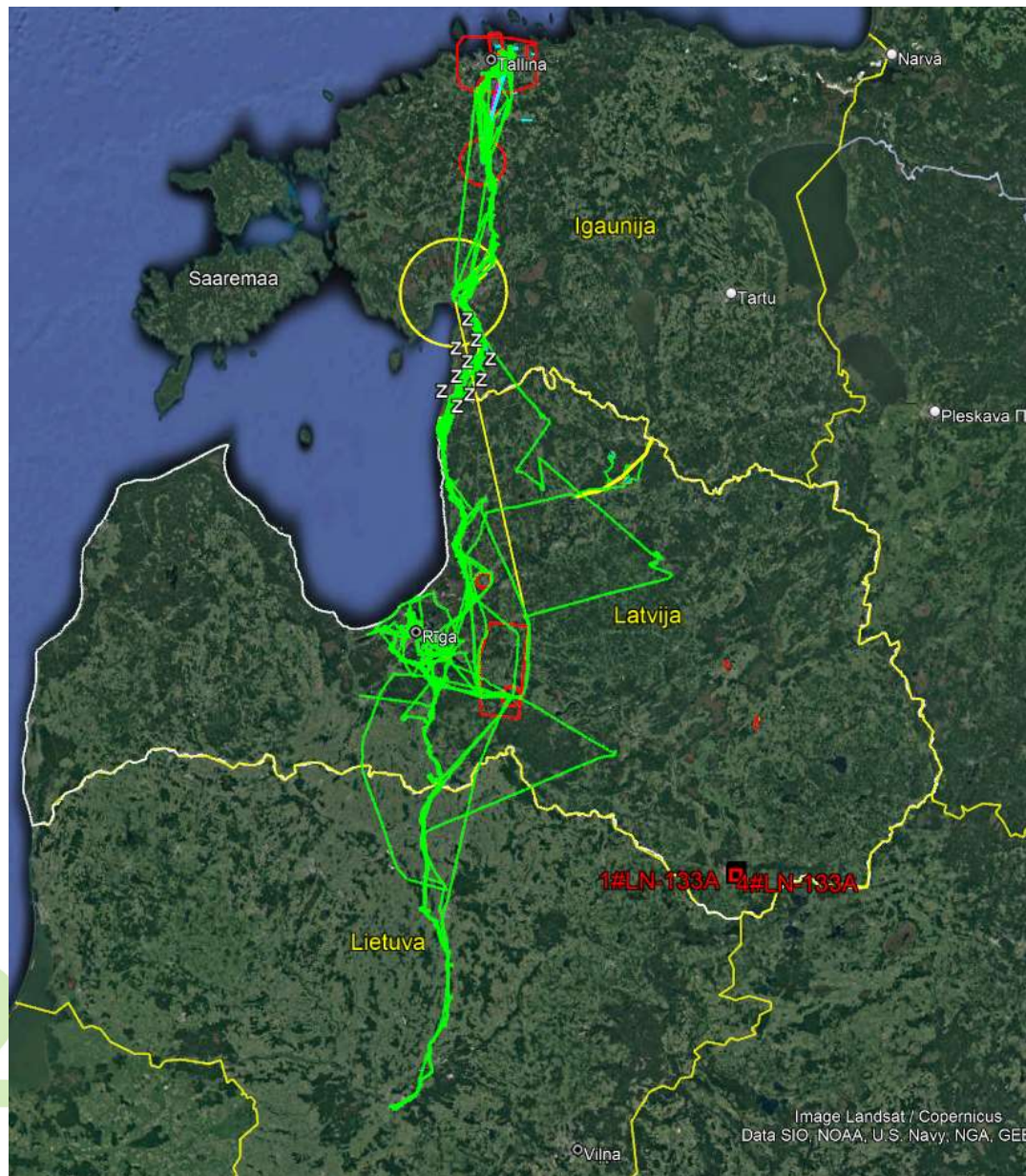
SIA TERRA TOPO

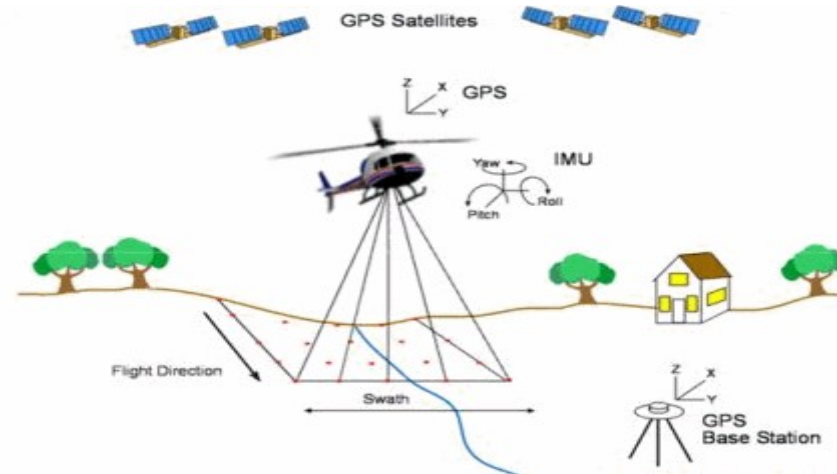


Terra Topo

Lidojuma maršruti
Kauņa-Rīga-Tallina

2022





2022





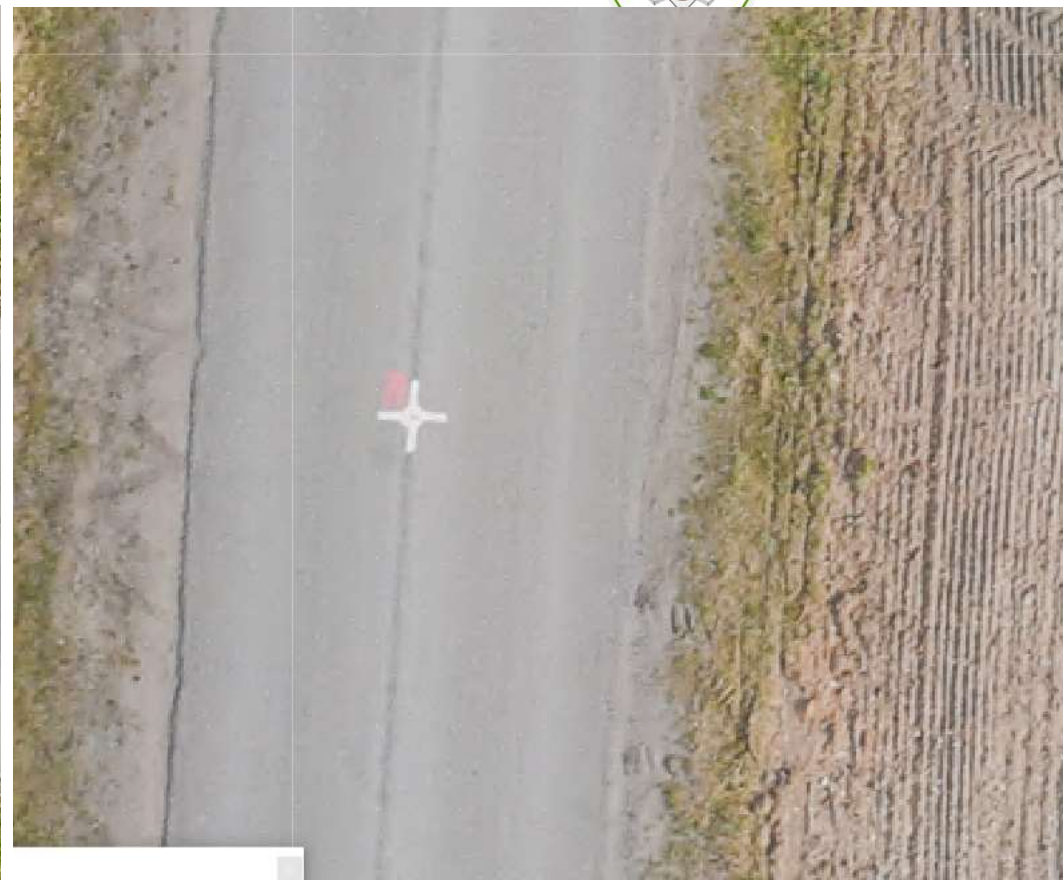
2022



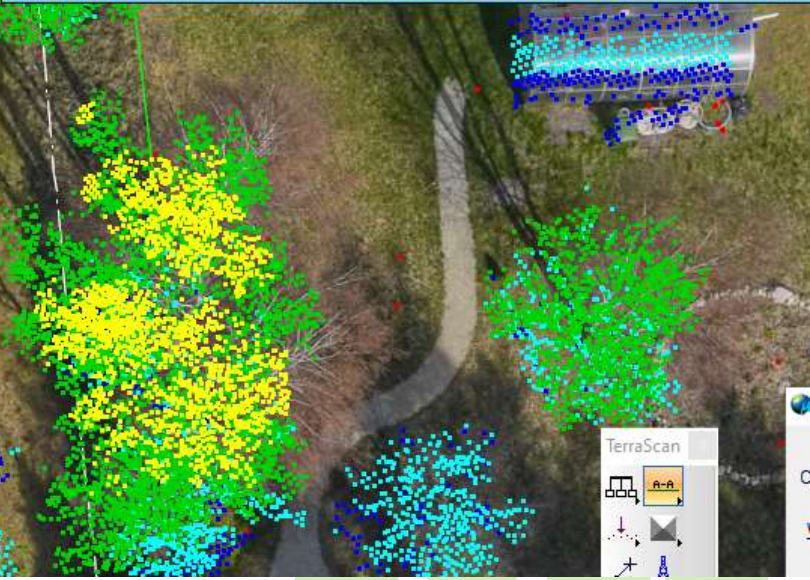
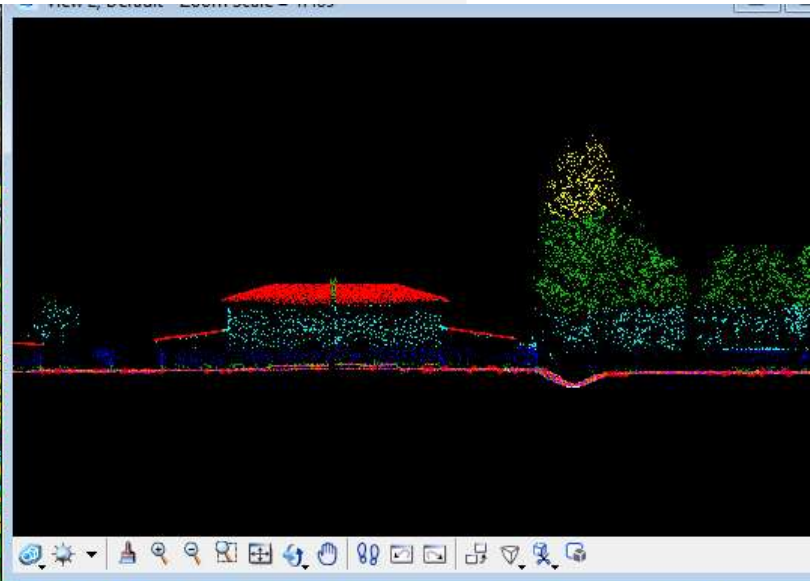
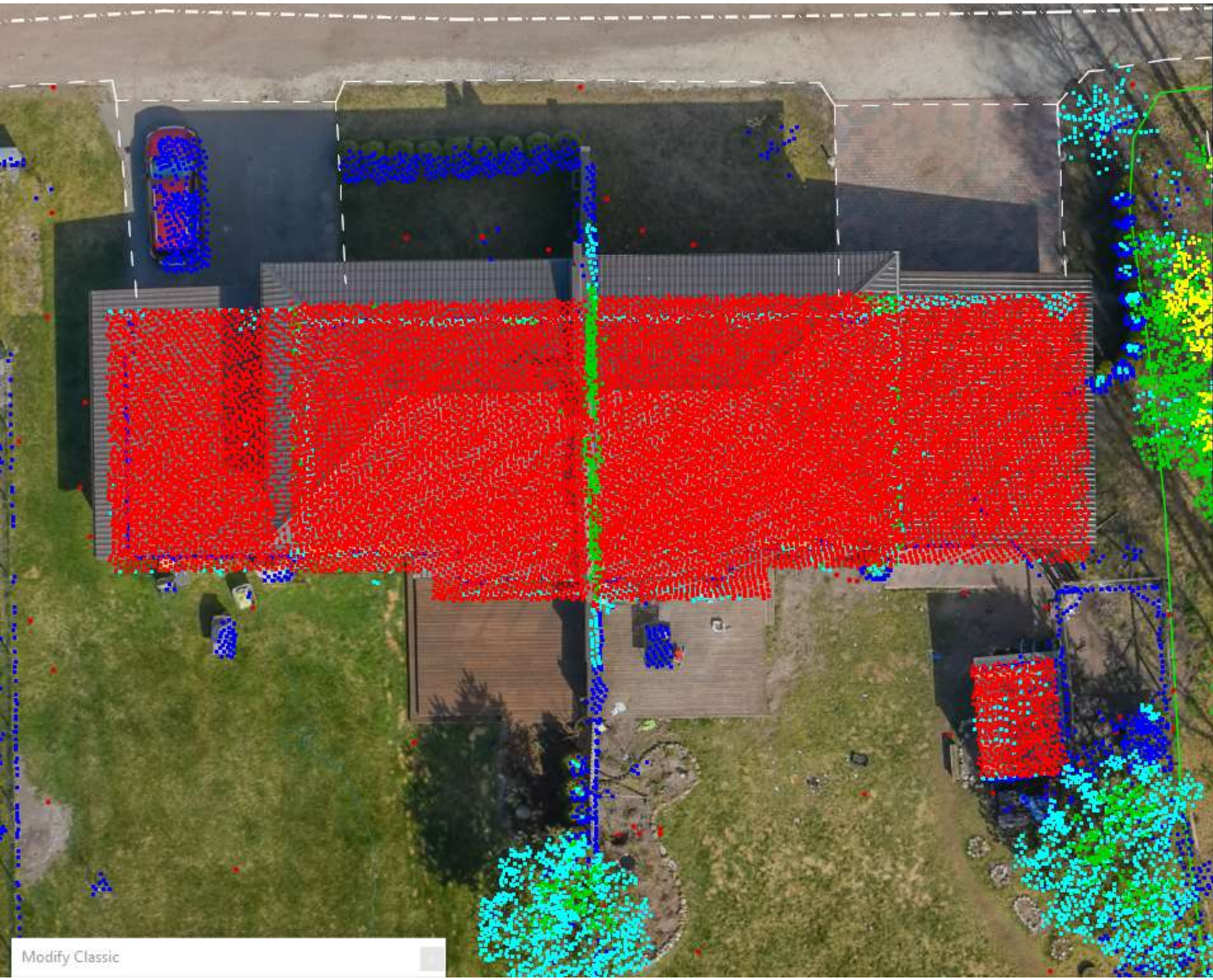
Topogrāfiskās izpētes gaitā tiks lietotas šādas **metodes**:

Trases aerofotogrāfēšana un lāzerskanēšana tika veikta ar SIA “Terra Topo” īpašumā esošo Vācijas firmas IGI komplektēto sistēmu **Litemapper 5500**, kura aprīkota firmas Riegl aviācijas lāzerskeneri 2*VUX-1 un ar daudzkameru RGB sistēmu, kuras kopējā izšķirtspēja 108 Mpix., kura tika uzstādīta uz sertificētu firmu speciāliem aviācijas darbu veikšanai SIA “GM Helicopters” helikopteriem. Iegūstamais lāzera datu punktu blīvums līdz 20-30 punktiem uz kvadrātmetru

2022



2022



Modify Classic

TerraScan

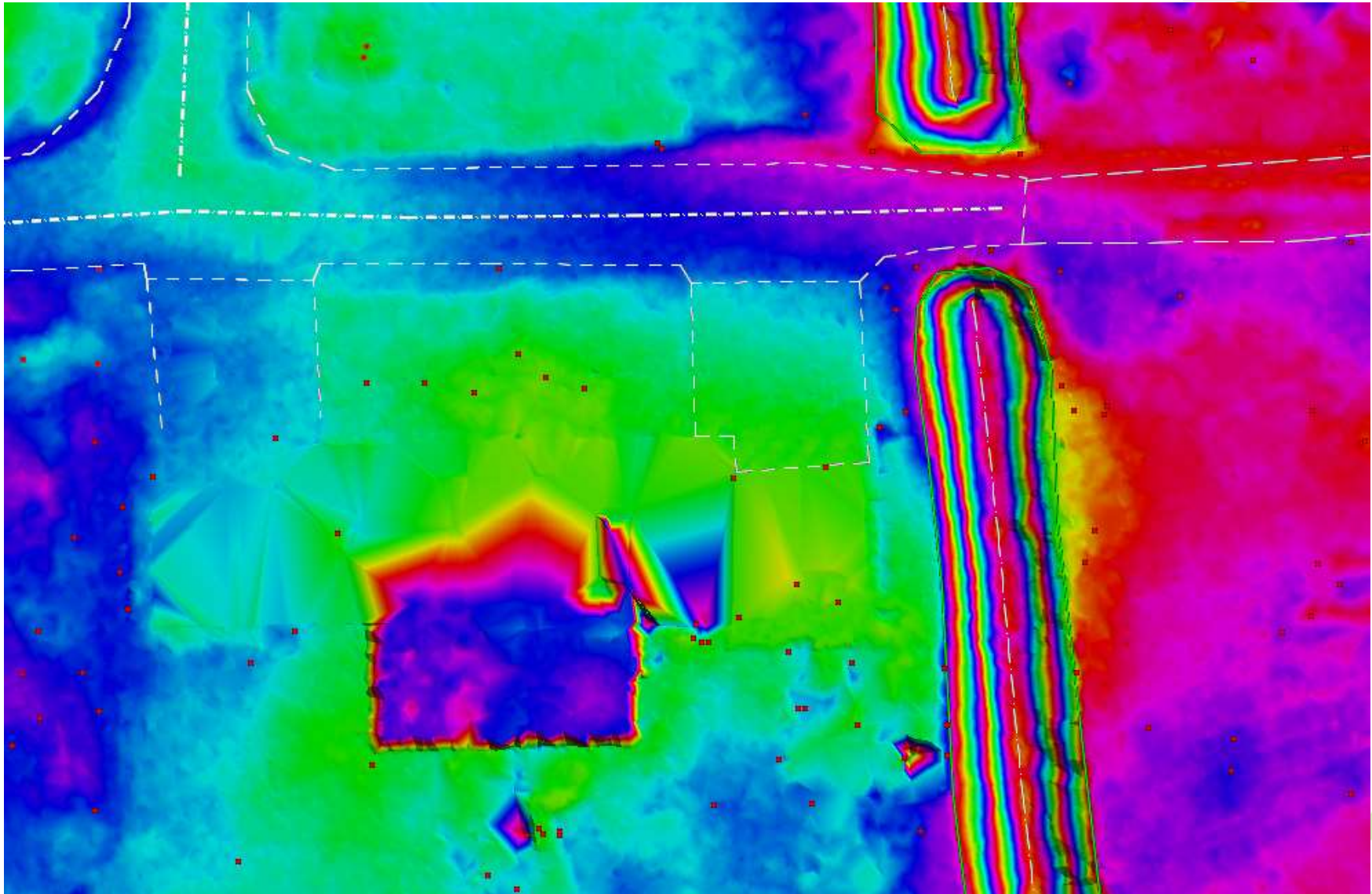
A set of icons for the TerraScan software interface, including a tree icon, a point cloud icon, a cross-section icon, and a search icon.

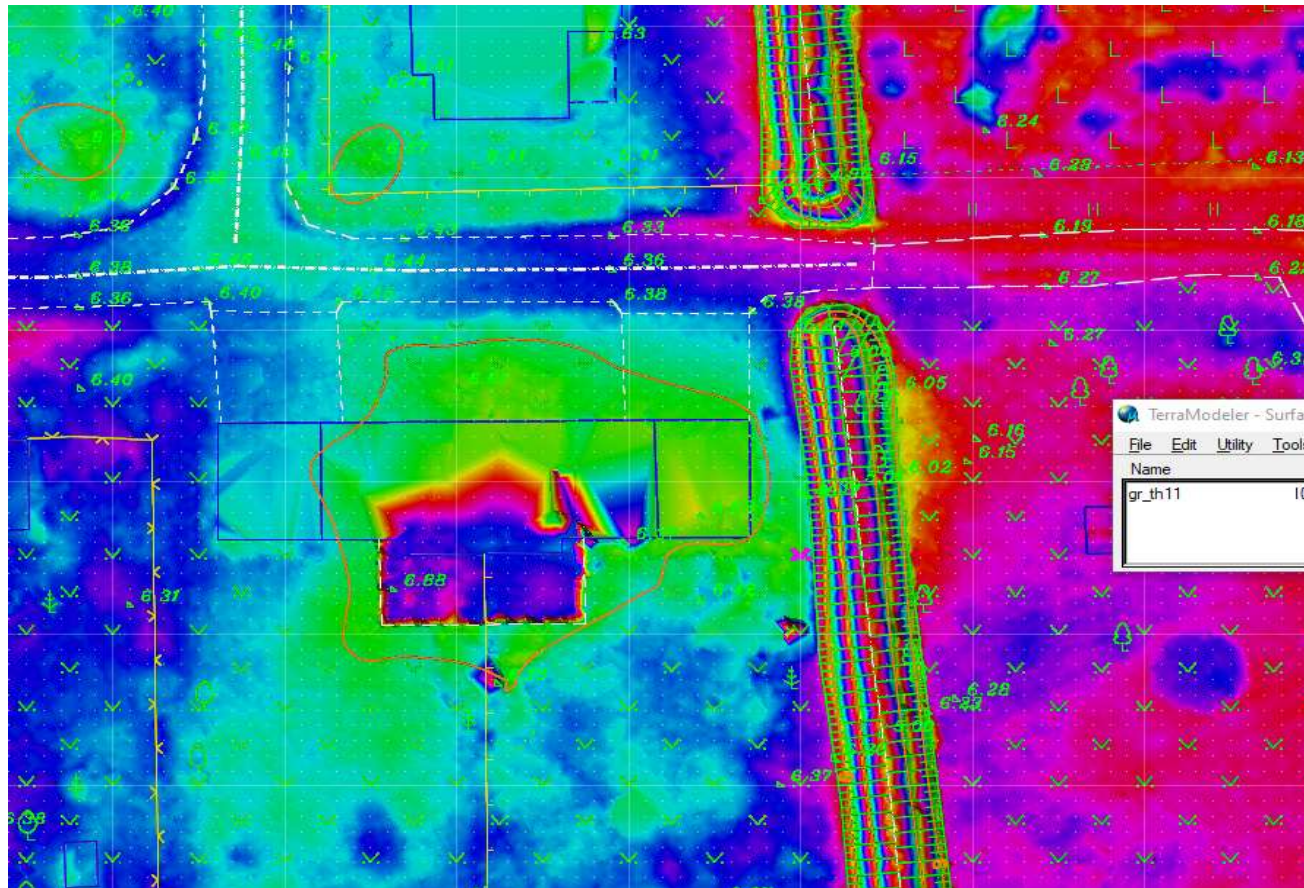


2022



2022





2022



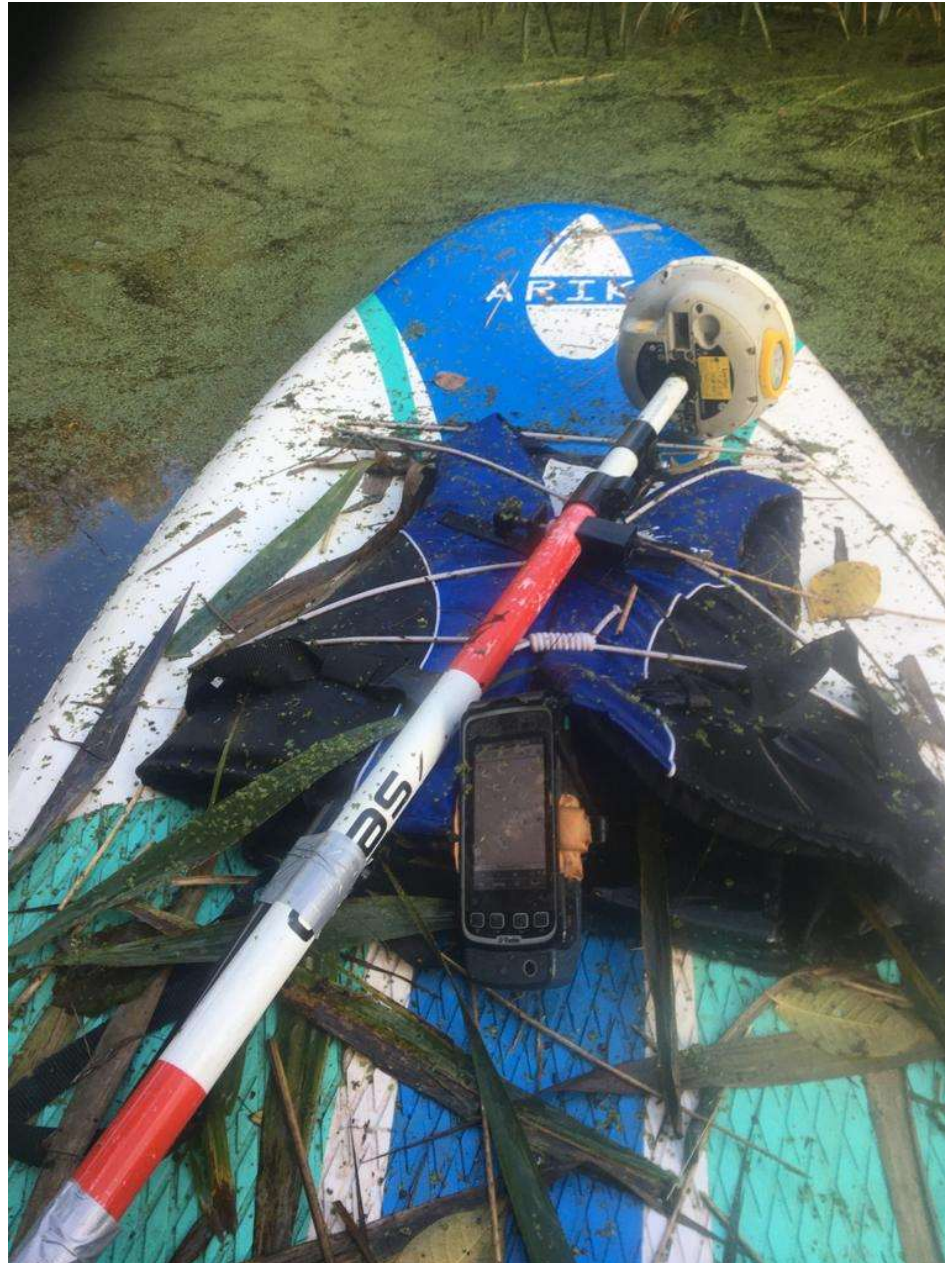
2022



2022



2022



2022



2022

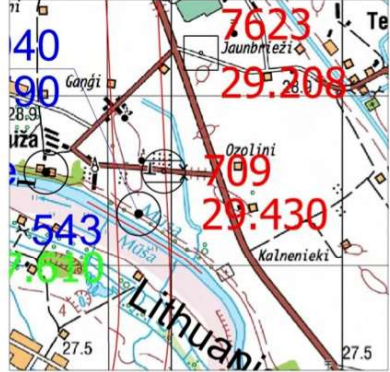
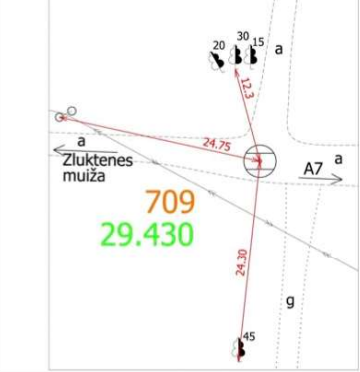


Latvijas 2. klases nivelēšanas tīkla shēma



2022

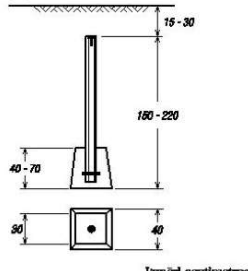
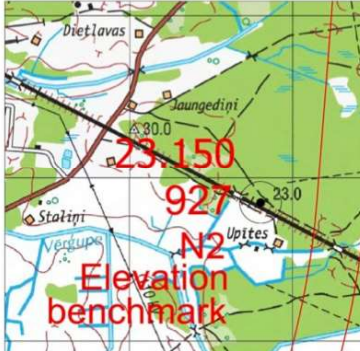
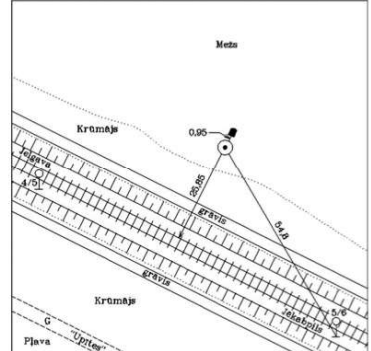




2022

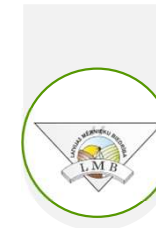
Point name	Point coordinates LKS-92	Point height
709	X= 239558.472	H(LAS-2000,5)= 29.430
	Y= 520958.863	
Type of marker Survey bolt on asphalt marked with ultra orange color.		Point description Placed on an abandoned asphalted road crossing in a old farm territory. Located in private territory. Easy accessible with car from Zluktene manor side. Created 2020.
Point location 		Location scheme 
Photo of marker 		Photo of location 



2022

Point name	Point coordinates LKS-92	Point height
927	X= 274845.057	H(LAS-2000,5)= 23.150
	Y= 516804.660	
Type of marker 		Point description Reachable on foot by crossing railway. With car not closer than ~50m via field road what leads to country house Upītes. Point ~1m under ground and covered with 3x3m mound. 26m from railway closest rail. Created 1948.
Point location 		Location scheme 
Photo of marker 		Photo of location 

Data about point obtained: <https://geodezija.lgia.gov.lv>



2022

Point Name Origin	Given coordinates and elevation in LKS92			Surveyed coordinates and elevation in LKS92			Difference between given and surveyed coordinates and elevation			Difference between surveyed 2 different measurements*			Notes	Mean coordinates and elevation in LKS92		
	X	Y	h	X	Y	h	X	Y	h	X	Y	h		X	Y	h
80250068	282895.366	518472.755	no data	282895.479	518472.818	18.449	-0.113	-0.063		-0.008	-0.012	-0.005		282895.483	518472.824	18.452
local point				282895.487	518472.830	18.454										
80250069	283124.788	518183.111	no data	283124.884	518183.182	17.068	-0.096	-0.071		0.018	-0.010	0.002		283124.875	518183.187	17.067
local point				283124.866	518183.192	17.066										
7001	new	new	new	281210.812	518563.516	27.055				0.000	-0.025	0.023		281210.812	518563.529	27.044
Terra Topo SIA				281210.812	518563.541	27.032										
3126	280607.536	518544.411	27.722	280607.605	518544.415	27.738	-0.069	-0.004	-0.016	0.002	0.022	0.003		280607.604	518544.404	27.737
local point	accuracy 0.2m	accuracy 0.2m		280607.603	518544.393	27.735			-0.013							
7002	new	new	new	277209.273	517511.175	28.257				0.010	-0.006	0.015		277209.268	517511.178	28.250
Terra Topo SIA				277209.263	517511.181	28.242										
927	274845	516805	23.150	274845.072	516804.656	23.177			-0.027	0.031	-0.007	-0.023		274845.057	516804.660	23.189
state point	accuracy 1m	accuracy 1m		274845.041	516804.663	23.200			-0.050							
201	271781.368	515749.461	24.221	271781.379	515749.490	24.262	-0.011	-0.029	-0.041	-0.012	0.014	0.021		271781.385	515749.483	24.252
local point				271781.391	515749.476	24.241			-0.020							
704	new	new	new	266885.621	514576.132	22.484				-0.002	-0.004	0.028		266885.622	514576.134	22.478
Terra Topo SIA				266885.622	514576.135	22.495										
				266885.623	514576.136	22.456										
705	new	new	new	261863.698	513238.331	26.447				0.014	0.000	0.014		261863.691	513238.331	26.440
Terra Topo SIA				261863.684	513238.331	26.433										
706	new	new	new	257563.070	514949.630	31.714				-0.003	-0.001	0.011		257563.072	514949.631	31.709
Terra Topo SIA				257563.073	514949.631	31.703										
98	253539.051	516803.557	23.333	253539.068	516803.569	23.359	-0.017	-0.012	-0.026	0.009	0.005	0.000		253539.064	516803.567	23.359
local point				253539.059	516803.564	23.359			-0.026							
707	new	new	new	246438.871	519533.106	28.227				0.004	0.010	0.000		246438.869	519533.101	28.227
Terra Topo SIA				246438.867	519533.096	28.227										
708	new	new	new	242896.994	521269.455	27.777				0.009	0.007	-0.025		242896.990	521269.452	27.790
Terra Topo SIA				242896.985	521269.448	27.802										
709	new	new	new	239558.465	520958.866	29.423				-0.014	0.007	-0.013		239558.472	520958.863	29.430
Terra Topo SIA				239558.479	520958.859	29.436										
1	240836.215	521155.533	31.054	240836.226	521155.534	31.041	-0.011	-0.001	0.013	0.004	0.000	-0.017		240836.224	521155.534	31.050
local point				240836.222	521155.534	31.058			-0.004							
7623	240251.127	521177.129	29.240	240251.138	521177.184	29.209	-0.011	-0.055	0.031	-0.002	-0.004	0.002		240251.139	521177.186	29.208
local point				240251.140	521177.188	29.207			0.033							
543	239311.04	520812.79	27.610	239311.032	520812.823	27.628	0.008	-0.033	-0.018	-0.002	-0.016	0.004		239311.033	520812.831	27.626
„Geodezijos darbai“, MB				239311.034	520812.839	27.624			-0.014							
47	237941.682	520685.965	28.119	237941.711	520686.007	28.108	-0.029	-0.042	0.011	0.001	-0.001	0.006		237941.711	520686.008	28.105
„Geodezijos darbai“, MB				237941.710	520686.008	28.102			0.017							
46	236350.551	519479.136	26.930	236350.534	519479.189	26.920	0.017	-0.053	0.010	0.001	0.000	-0.001		236350.534	519479.189	26.921
„Geodezijos darbai“, MB				236350.533	519479.189	26.921			0.009							
45	235240.964	517818.351	35.177	235240.979	517818.406	35.169	-0.015	-0.055	0.008	0.000	0.000	-0.004		235240.979	517818.406	35.171
„Geodezijos darbai“, MB				235240.979	517818.406	35.173			0.004							

2022