



# Life of EGÜ and Estonian Surveyors during period of COVID

Mairolt Kakko  
Eesti Geodeetide Ühing (EGÜ)



# 2020 shocking spring

- Visit to LMB-100 event on Riga 28.2.20
  - COVID was close, just few days ago first COVID case was discovered – Citizen of Iran, traveling Riga -> Tallinn by bus
- Annual Conference successfully organized in Tallinn, 6.3.20:
  - Elections of new EXB
    - Tiina Oeslg, Raul Rokk, Margus Sarapik, Kalle Kümnik, Harli Jürgenson, Erik Lillend, Mairolt Kakko, Marju Toova - secretaty
    - Record of participants: ca 260**
    - Incl. Latvia, Lithuania, Finland
- Lockdown and „special rules“ after 6 days, when 20 new cases in Estonia.







# 2020: Association activities

- Certificate giving procedure
  - „Spring round“ successfully done
  - Additional „summer round“ for Cadastral Surveyors due to the change of licensing
  - „Autumn round“
  - Difficulties with organizing the exams
    - Kehtna Professional school instead of University of Life Sciences Tartu
- Legislation on Cadaster
  - Company licenses expire date postponed – 6 months after end of Special Rules (17.5.20)
- EGÜ Summer Seminar canceled
  - Planned to September, but 2nd wave started

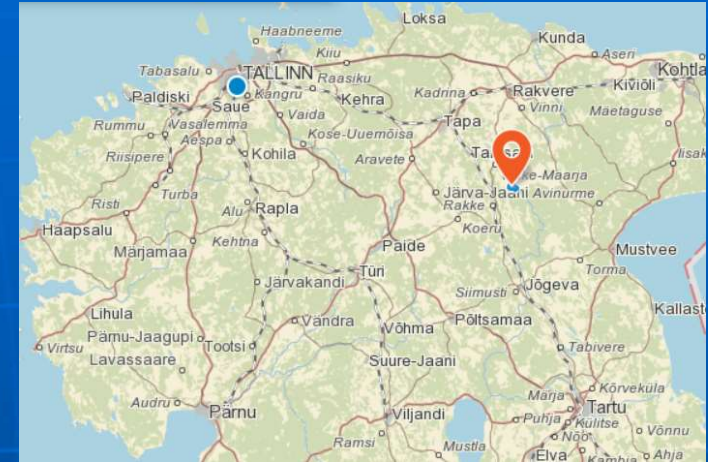




# 2020: Association activities

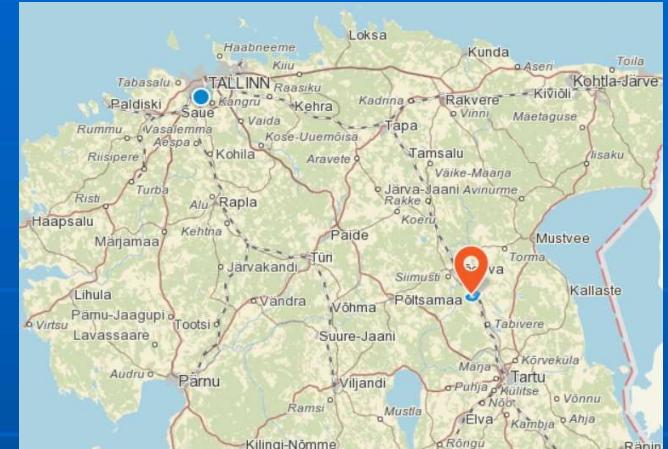
- Two events on Struve Arc:
- Opening of Võivere Windmill with Struve Museum, August 29th
  - The best example of enthusiasm in Estonian Surveying sector
  - 10th hike between baseline endpoints Simuna – Võivere, 4,5 km, tradition started by EGÜ and was closed when Võivere windmill and Struve museum completed
    - 110 km from Viljandi
- Start marking the Arc point place in Kaarepere, September
  - Project opening seminar
    - 87 km from Viljandi

# Struve Arc Baseline end Võivere





# Struve Arc point Kaarepere



10. oktoobril kell 12  
Struve meridiaanikaare punkti avamine  
Kaareperes Aruküla mäel

Kell 12.30 vestlusring valdkonna asjatundjatega  
Kaarepere huvi- ja spordimajas. Olete oodatud  
osa saama põnevast ajaloorännakust mööda Struve kaart!

Samal ajal saab kaasa elada kettagolfi  
maakonna meistrite väljaselgitamisele.  
Kõigile huvilistele on avatud Kaarepere huvi- ja spordimaja.





# 2020: International Events

- CLGE GA-1 Skopje canceled
- FIG WW Amsterdam canceled
- CLGE EXB meeting
  - Planned to be in Tallinn, June -> July
  - EE traveling restrictions for BE, CH, FR
  - Moved to Berlin
    - My travels 2020 after COVID – Berlin and Latvia
- CLGE GA-2 Hybrid from Athens
- CLGE Contest „Geomatics on the Move“
  - Together with GSA (EUSPA – European Space Program Agency) with two online ceremonies
    - EU Space week for GSA track
    - Global Surveyors Day for CLGE track (begin 2021)
    - Way more audience as before at Intergeo







# 2021: EGÜ Conference

- March 5th, 2021, Online from Tartu, Estonian National Museum
  - EX Board and part of the presenters in site
  - Part of the presenters and 100% of audience online





# 2021: Association activities

- Certificate giving procedure
  - „Spring and Autumn rounds“ successfully done
  - New standard for Cadastral Surveyor professional certificate
  - Kehtna Professional school keeps the „Hub of exams“
- EGÜ Summer Seminar cancelled second time 😞
  - Planned to September again, but 3rd wave started
- „Winter seminar“
  - with Land Board and Company representatives – maximum 50 pers





# 2021: Association activities

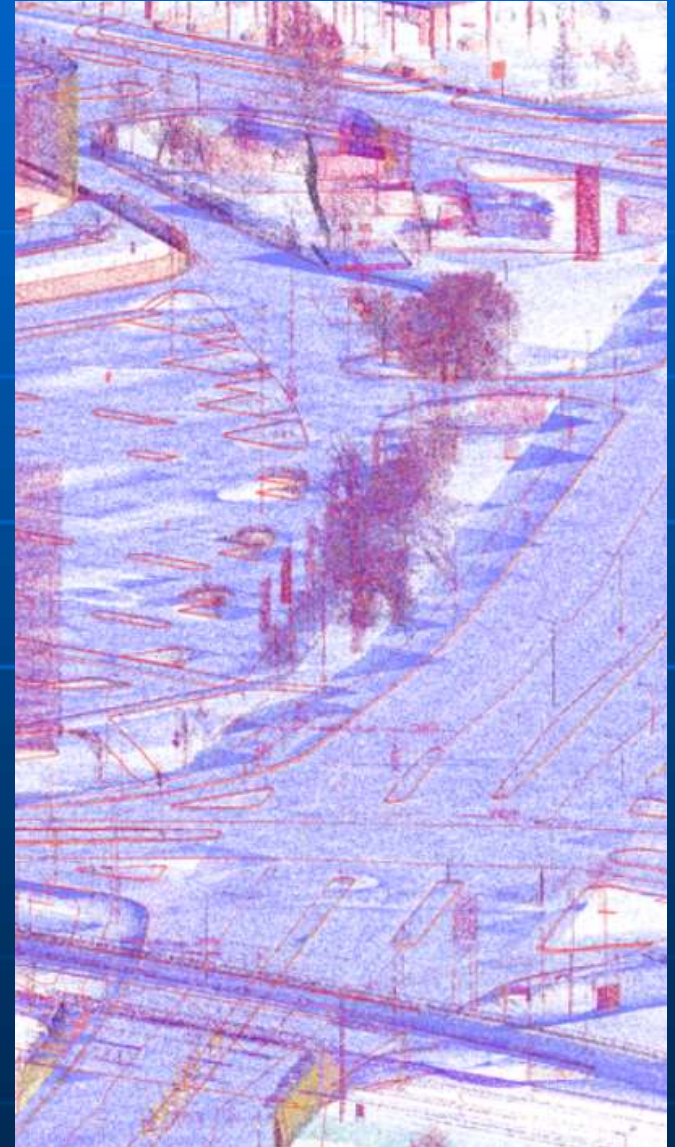
- CLGE GISCAD-OV Project
  - For implementation of new HAS of GNSS
  - Tests against regulations of Cadastral Surveying across Europe
  - Estonia as one of 7 pilot Countries
  - Test measurements in two rounds
  - Targeted for wider sector of stakeholders
  - CTO Ivars Nudiens (LAT)
- EGÜ Summer Seminar canceled second time
  - Planned to September again, but 3rd wave started
- „Winter seminar“
  - with Land Board and Company representatives – maximum 50 pers





# 2021: market

- Many people remain homeworking, both Computer and field workers
  - Surveying sites open
  - Restrictions inside some buildings only
  - Online meetings almost everyday
  - Mailbox always full at Monday morning
- Market situation is better then 2020
  - Prices back higher
  - Lack of good specialists
  - Influence of Cadastral Law changes
- Global trends
  - COVID gets part of a life
  - Energy prices
  - Real-estate booming





# 2021: International events

- CLGE spring GA Athens -2 – hybrid – online participation
- FIG WW, Amsterdam (fully online – June at midsummer time) – online participation partly
- Intergeo – October - hybrid
- CLGE autumn GA Saariselkä, november, mainly physical participation. Mairolt and Hugo there. Last weekend before new restrictions in Finland.





# 2022: EGÜ Conference

- March 4rd, 2022, Hybrid, but mainly people in Tartu, Estonian National Museum
  - New EX Board: Mairolt Kakko, Erik Lillend, Tiina Oeselg, Margus Sarapik, Aive Liibusk, Mart Rae, Raul Vanikov



14.06.2022



# 2022: Association activities

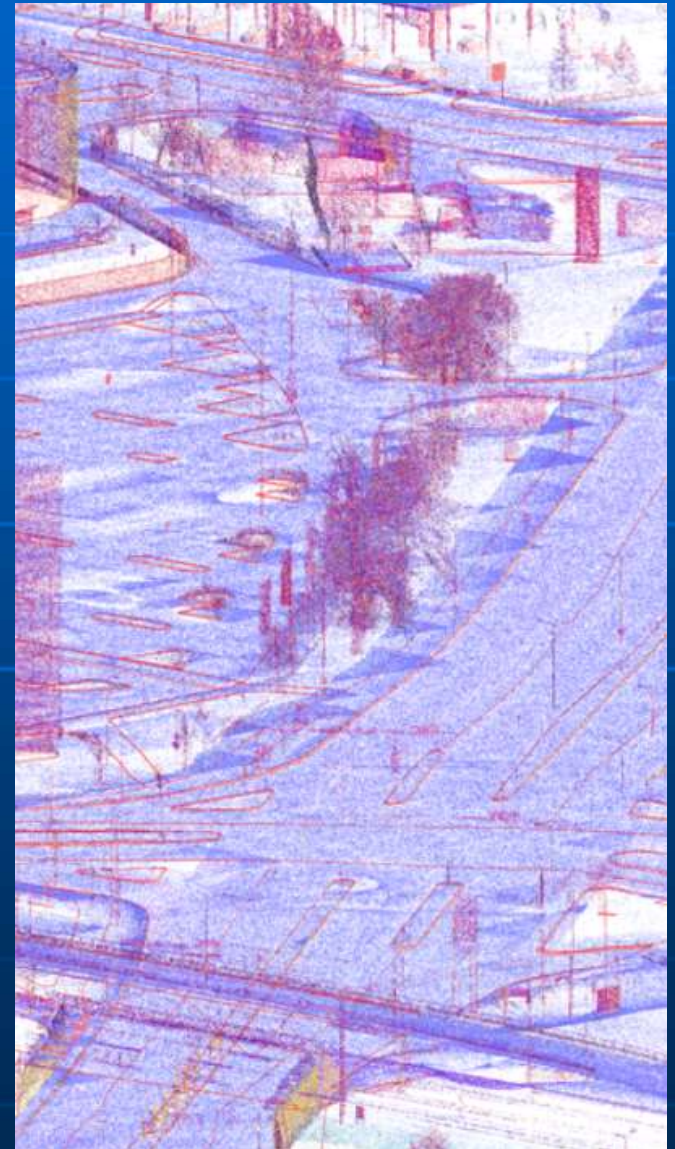
- Certificate giving procedure
  - „Spring round“ almost successfully done
  - New standard for Geodetic Surveyor professional certificate (process started, so far levels 4 to 7, but level 8 will be added)
  - Kehtna Professional school still keeps the „Hub of exams“
- Baltic Forum in Viljandi
- EGÜ Summer Seminar planned to Saaremaa, begin of Sept.





# 2022: market

- The Russian war in Ukraine
  - Down periods are expected
  - Many military sights
  - Rail Baltica more actively on free market
- Market situation is as unexpectable as in 1st half of 1990-s
  - Rise of input prices
  - Possible fast drop down of some types of Surveying work
  - Big Projects still face lack of good specialists
  - New trends
- Global trends
  - We know, who loses the war, but we don't know how and how long it lasts







# 2022: International events

- CLGE spring GA Skopje, 12-14.04.22 – over 60 part.
- Future events:
- FIG Congress, Krakow September
- Intergeo Essen – October





# Conclusions

- We entered to very tricky period with this decade
  - There are many challenges as well as threats and risks
  - There is no space for comfortable zone
  - The world is rapidly changing
  - Safety (in every meaning) will be big value
- 
- Surveyors have to find the smart way how to create **SAFETY**



Täna tähelepanu eest, head Balti  
Foorumi jätku Viljandis  
Paldies par uzmanību, labu Baltijas  
forumā turpinājumu Vīlandē  
Ačiū už dėmesį, gero Baltijos forumo  
Viljande tęsinio